

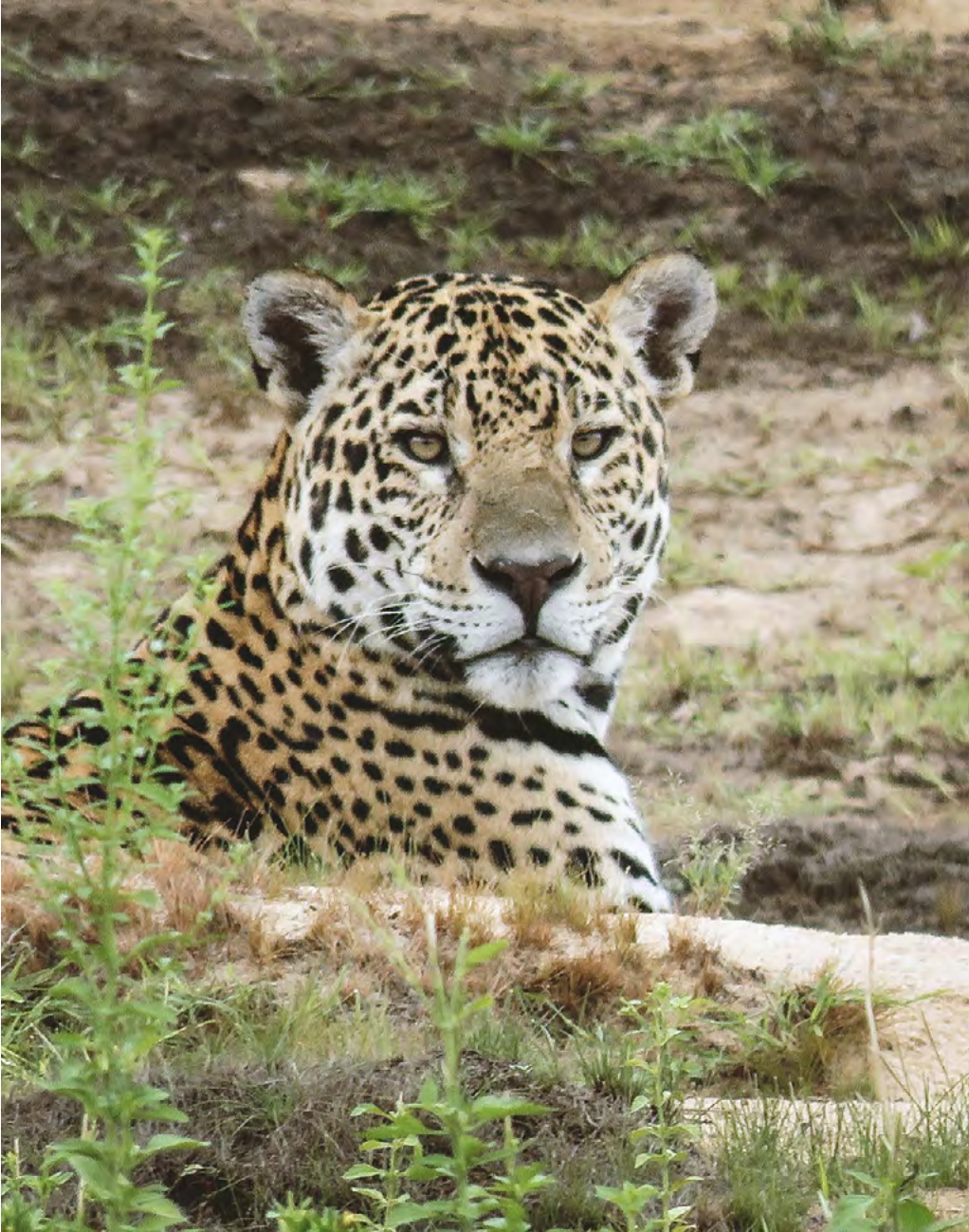


**RIDE ANDES BRAZIL  
PANTANAL PARADISE**

Season: May to July & September to November

*The Pantanal is where jaguars, tapirs, giant anteaters, capybaras & giant otters live in significant numbers. Toucans, macaws, parrots and many more bird species also inhabit this immense wildlife*





## **Introduction**

An unbeatable, in-depth experience of the Pantanal's wildlife, vegetation and culture. A unique itinerary, riding through the savannahs, wetlands & forests between three very distinct locations in the heart of the massive Pantanal wetlands – considered one of the most pristine game reserves in the world (a UNESCO World Heritage Site). Also, join the ranch hands working the thousands of cattle and embark on boats for even more outstanding wildlife observation.

## **Testimonial**

"The trip was once in a lifetime. The wildlife and vast array of birds were simply stunning, out of this world. The people were kind, generous and generally lovely. The horses knew their job and looked after me. ... I can't wait to join you on another trip" James, UK.

## **Pantanal Paradise**

Starting with 3 nights at a comfortable ranch, and ending at a small hotel by a river for two nights - all bedrooms with a private bathroom. One night between those at a thoughtfully set up enclosed hammock outpost with well-equipped bathrooms and a charming dining room.

## **What You Need To Know?**

- 8-day itinerary (day 1: arrival at Campo Grande Airport & overnight)
- Private groups/fixed date departures (please request dates)
- Maximum 10 guests
- Single riders welcome
- Staying at a working cattle ranch, experiencing the cattle work
- Riding in varied Pantanal vegetation zones (UNESCO Natural World Heritage site)
- Season: May to July & September to November
- Flexible start day for private groups
- Non-riders: excellent option for avid wildlife viewers, with wildlife walks & boat trips with an expert guide



**RIDE ANDES**

rideandes@rideandes.com  
www.rideandes.com  
@ride\_andes  
facebook.com/RideAndes

WhatsApp, Tel. 24/7:  
+593 999 738 221



## **Pantanal Paradise Itinerary Overview:**

### **DAY 1: Arrival Campo Grande, Pantanal gateway, South America Centre Point.**

Meet at the airport, transfer to the best hotel in Campo Grande, briefing, overnight.

### **DAY 2: Drive into the Pantanal, Wildlife already abounds. Afternoon ride.**

*Lunch, dinner & overnight at the Fazenda.  
B, L, D approx 3 hours riding*

### **DAY 3: Morning & Afternoon Wildlife Viewing Rides, Variety of Routes & Pace.**

*Lunch, dinner & overnight at the Fazenda.  
B, L, D approx 6 hours riding*

### **DAY 4: Working the Cattle Alongside the Cowhands, What an Insight!**

*Lunch, dinner & overnight at an Outpost.  
B, L, D approx 5 hours riding*

### **DAY 5: Riding Out With the Sunrise, A Full Day Across the Savannas.**

*Lunch, dinner & overnight at the Fazenda.  
B, PL, D approx 8 hours riding*

### **DAY 6: Into the Forests and To The Riverbank Hotel. Afternoon Boat Trip.**

*Lunch, dinner & overnight at Riverside Lodge  
B, PL, D approx 3 hours riding*

### **DAY 7: Shady Trails In Lush Woodlands, Hidden Lakes, Abundant Wildlife.**

*Lunch, dinner & overnight at Riverside Lodge  
B, PL, D approx 6 hours riding*

### **DAY 8: Early Morning Riding, Walking or Boating Departure.**

*B, approx 2-3 hours early morning activities*

### **End of services**



### **Arriving/Departing/Extensions:**

Start and end point: Campo Grande Airport, Mato Grosso do Sul State. We are able to help you arrange additional trips in Brazil, for example, to Rio De Janeiro, Bahia...





### **Detailed Itinerary:**

#### **DAY 1: Arrival Campo Grande, Pantanal gateway, South America Centre Point.**

Guests will be met at the airport off their individual flights and driven to the hotel -a modern hotel with gardens, terraces and an outdoor swimming pool. Your guide will join you for an early evening briefing.

*Overnight at Campo Grande Hotel.*

#### **DAY 2: Drive into the Pantanal, Wildlife already abounds. Afternoon ride.**

A fascinating 4x4 vehicle drive along roads that soon turn into sand tracks as we go deep into the Pantanal ranch area. We already spot the native wildlife – birds and mammals, introduced bovines and also see the cowhands at work with their mules & horses. Arrival at the Fazenda for lunch, welcomed by the family. In the afternoon, once everyone is settled on their horse, a ride out and first impressions of the Pantanal. Riders often experience their first disconcerting ride through caiman-filled waters.

*Lunch, dinner & overnight at the Fazenda.  
B, L, D (approx 3 hours riding)*

#### **DAY 3: Morning & Afternoon Wildlife Viewing Rides, Variety of Routes & Pace.**

With 17,000 hectares (42,000 acres) to ride on, the guide has a wealth of distinct routes to choose from for the morning and afternoon rides. The huge jabiru storks are spotted on the edges of water, the deer in the marshes, tapir in the scrubland and toucans & macaws in the trees. The sandy tracks lend themselves to some long canters and the shallow waters to paddling. After the ride, relax on the veranda or under the mango trees listening to the incredibly noisy ibis and parrots.

*Lunch, dinner & overnight at the Fazenda.  
B, L, D, approx 6 hours riding*





#### **DAY 4: Working the Cattle Alongside the Cowhands, What an Insight!**

Today guests join the cowhands, the activity: separating cattle, herding them to another field or to a corral... decided while be decided by the fazenda owner depending on what work needs doing. The fields are enormous and the low, dense forest in most fields which makes finding all the cattle prior to moving them quite a task. As the cattle are herded out of the dense undergrowth and a sizeable group of animals starts forming the senior cowhand takes up his horn and starts riding away and the cattle follow steadily, seemingly mesmerized by the sound. On a late afternoon wildlife walk toucans and the beautiful hyacinth macaw area usually sighted.

*Lunch, dinner & overnight at the Fazenda.  
B, L, D, approx 5 hours riding*





### **DAY 5: Riding Out With the Sunrise, A Full Day Across the Savannahs.**

An early start is needed to reach the outpost before sunset. Taking advantage of the cool morning we pick up the pace, pausing to photograph the large families of capybara that we come across. Further and further away from the ranch, following dry 'wadis', we ride through vast areas barely touched by man, observing fascinating flora and fauna - frequently coming across a Giant Anteater. Stopping at watering holes to let the horses drink, it is quite unnerving to realise that the water is far from empty but packed with caiman! Meeting the vehicle for a snack stop and lunch provides cold drinks and pleasant breaks and, after a siesta, we then ride on towards the setting sun in time to enjoy a superb sunset accompanied by a glass of wine and install ourselves in hammocks\*. In this remote wilderness, dinner is an unexpectedly elaborate affair.

*Dinner & overnight at the outpost. \*For those that wish, it is possible to be driven to the riverside lodge, instead of staying at the outpost. B, PL, D, (approx 8 hours riding)*

### **DAY 6: Into the Forests and To the Riverbank Hotel. Afternoon Boat Trip.**

A sunrise walk with the guide is well worth it - being far from any settlement the animal life is exceptional. The pairs of red-and-green macaws a magnificent splash of colour as they fly over us. Following a delicious breakfast, including local fruits and, of course, fresh brewed Brazilian coffee, a morning ride begins to the small riverside hotel. Guests usually elect to take to the river this afternoon; several of our groups have been graced by a very lengthy appearance of a jaguar while patrolling in the small motorboats. Five species of kingfisher fish the Pantanal waterways and local guides tell me that even on a very relaxed day guests can spot 100 bird species - the sheer number and variety here leaves an indelible impression.

*Lunch, dinner & overnight at Riverside Lodge B, L, D, (approx 3 hours riding in the morning)*



**DAY 7: Shady Trails In Lush Woodlands, Hidden lakes, Abundant Wildlife.**

An early morning walk down to the river is a must: giant otters live close by and jaguars frequently stroll past the hotel. The morning ride starts with getting comfortable with new horses then we set off into the verdant forests. Many medicinal plants are found in these 'jungles' and the local guide will explain their preparation and use. It is not uncommon to glimpse a troop of monkeys swinging through the trees overhead (marmosets) and hear the eerie call of black howler monkeys.

The afternoon ride will take a different route, with some long canters along the sandy tracks on the way to a shallow lake – a favourite haunt for the macaws.

*Lunch, dinner & overnight Riverside Lodge.  
B, PL, D, approx 5 hours riding*

**DAY 8: Early Morning Riding, Walking or Boating Departure.**

Guests will be able to decide on an early morning final ride out, a motorboat trip or a walk. Alternatively, a bit of a 'lie-in', listening to the chatter of the birds in the surrounding trees. After breakfast in the lovely garden dining room, departure in 4x4 vehicles from the hotel to Campo Grande, in time for outward flights. The safari is not yet over and frequently animals are sighted crossing the dirt track. A quick snack stop & souvenir hunt as we reach the tarmac and, time permitting, a chance in Campo Grande to visit a saddler and also hats and colourful hammock sellers.

*B, approx 2-3 hours early morning activities*

***End of services***





**2021/2022 Prices from:**

Per person in US Dollars based on double/twin room share

Length	double/twin per person	Single Supplement	Maximum Rider Weight 100kg/200lb
(8D/7N)	from USD 4595	USD 765	

**Included:**

All the horse riding and activities as described in the itinerary above, horse and naturalist bilingual local guide, all necessary transport, all meals described in the itinerary (from breakfast on day 2 to breakfast on final day), accommodation (6 nights private double or twin room with en-suite bathroom; 1 night hammock).

**Not included:**

Dinner day 1, lunch day 8, medical insurance (mandatory), personal expenditure, alcoholic beverages, discretionary tips.





## **F.A.Q's**

**Horses & Tack:** During this tour, riders usually stay with the same two horses (as long as the rider is happy!). Our intention is that riders can actually build a bond with their horse and enjoy not only the landscape and ride but also the company of their horse! One or more spare horses will accompany us in case a change is needed. The Pantanal horse has developed to be able to power through water and is also agile while working cattle. The saddle is covered with a very comfortable sheepskin. One handed, 'neck reining' style – very easy to pick up.

**Accommodation:** Night 1: Campo Grande hotel; Nights 2-4: at a 17,000 hectare fazenda; Nights 6 & 7: at a riverside recanto (small hotel); all have private twin/double rooms with en-suite bathroom and air conditioning. WiFi and pleasant shady areas. Night 5: is in hammocks at a lovely wilderness outpost - but this is not a basic hammock stay (mattresses also available), the hammock area is screened in, as are the delightful dining area and adjoining blocks of bathrooms with hot running water. Option: to be driven on to the recant instead of staying at the outpost (extra charge applies).

**Meals:** Meals, including lunches, are taken at the fazenda/recanto except for the delicious picnic set out on day 5. Varied, home cooked Pantanal dishes are served -red meat, fish, rice, beans and manioc; fruit and salads are also served. We can easily cater for vegetarians/specific dietary requests as long as we are warned in advance.

**Climate:** The Pantanal weather leaves us two windows of ideal riding time: May-July (beginning of dry season) with a lot of water around and cooler weather with the potential of cold days (sweaters needed, fires lit in the fazendas) and September-early November (end of dry season) with small water holes left and potential of 40C+/104F midday temperatures and rain storms (warm rain!).

**Clothes and Equipment:** Travel notes will be sent with useful information including a suggested packing list and guide contact details etc.

**Emergencies:** In case of accident, the guide carries a first aid kit, one of the two guides will go for help; there is a backup vehicle to call in and the fazenda and recanto have telephones/radios and airstrips.

**Health Services:** The Pantanal is not linked to the Amazon basin, and it is a very healthy 'non-tropical' environment. In general, public sanitation and health care in Brazil are good. An adequate travel health policy is mandatory. In the event of illness or accident during your stay, you should be prepared to pay for assistance, then claim for reimbursement.

**Safety:** Risk of disease is minimal in the Pantanal as is the risk of theft. Theft can be an issue in the capital and large cities -as with every large city in the world there are a few common-sense rules to follow

**For futher information please contact:  
rideandes@rideandes.com  
www.rideandes.com**



## Important Notes

- Booking will be confirmed upon receipt of the corresponding deposit (A 30% non-refundable payment will be required upon confirmation and balance of payment will be required no later than 45 days before beginning of the tour).
- **Exceptional postponement/cancellation policy** in place due to circumstances directly related to Covid-19, please request full details.
- We reserve the right to alter the itinerary due to circumstances beyond our control.
- Prices can alter without prior notice (preceding a confirmed booking)
- Appropriate medical insurance is mandatory and the responsibility of each guest/booking agent.
- It is the responsibility of the individual guest/booking agent to ensure that participants have the necessary riding skills to take part in the chosen tour.
- Rider weight limits are in place, please refer to each itinerary for details
- Guests are strongly advised to bring and wear their riding helmets while riding during the tour.
- Guests will be required to sign a responsibility release before starting a tour.

## About Ride Andes:

Sally Vergette, an English rider, moved out to Ecuador in 1996 and shortly afterwards founded Ride Andes specializing in tours 'journeying on' through magnificent parts of South America. In 2003, using her knowledge acquired in Ecuador and with a local business partner, she was the first to set up estancia to estancia riding tours in Uruguay.

Ecuador is still her base but Ride Andes is involved in providing spectacular riding tours – many itineraries designed by Sally - in Argentina, Brazil, Chile, Chile-Argentina, Colombia and Uruguay. Sally is still very active in all aspects of the rides in these destinations but is now supported by excellent local guides and only leads a few of these tours.



**For further information please contact:  
rideandes@rideandes.com  
www.rideandes.com**





RIDE ANDES

[rideandes@rideandes.com](mailto:rideandes@rideandes.com)  
[www.rideandes.com](http://www.rideandes.com)

 @ride\_andes  
 [facebook.com/RideAndes](https://facebook.com/RideAndes)

WhatsApp, Tel. 24/7:  
+593 999 738 221